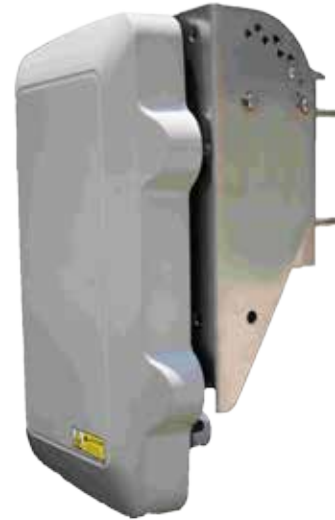


Sabre Ranger BGAN Terminal

Ruggedised BGAN Terminal designed for long term outdoor installations.

Sabre Ranger delivers a reliable, low-maintenance outdoor BGAN terminal for stable connectivity.



Overview

The Sabre Ranger is a BGAN terminal with a ruggedized mechanical enclosure built for long term outdoor all weather installations. It is designed for SCADA/Telemetry applications in remote unmanned locations.

Ruggedised for outdoor use

The firmware is designed to provide reliable and stable BGAN connectivity continuously for long periods, without the need for user intervention.

To ensure that users are able to remotely control the device to specific features have been added to the standard BGAN feature set:

- The PDP context of the Sabre Ranger can be activated or deactivated remotely via SMS
- The Sabre Ranger can be rebooted remotely via SMS.

The Sabre Ranger is supplied with a mounting frame allowing for ease of antenna pointing.

Details

Manufacturer:	• Addvalue
Network:	• Inmarsat
Device Type:	• Module
Markets:	• SCADA / Telemetry • Utility • Military • OEM • Tracking

Technical Specs

Mechanical & Environmental:

- Length 305 mm
- Width 186 mm
- Depth 49 mm
- Weight 11.5 g (excl. mount / cables)
- Operating temperature -40°C to +80°C
- Humidity 95% RH at +40°C
- Storage temperature -40°C to +80°C
- Water and Dust IP-65 Compliant

Certification and Compliance:

- Inmarsat Type Approved
- CE
- FCC
- IC (Industry Canada)
- CSA (Safety cCSAus)
- IP 65
- NEMA Type 4x
- RoHS

Product Highlights:

- Simultaneous Voice & Data
- Up 384kbps Data Rate
- Ethernet and Analog Phone Interfaces
- Full AT Command Set
- PDP Activation/Deactivation via SMS
- Reboot Via SMS
- Ruggedised IP65 Enclosure

Frequency Bands:

- Satellite Transmit
 - 1626.5 - 1660.5 MHz
- Satellite Receive
 - 1525 - 1559 MHz
- GPS Frequency
 - 1574.42 - 1576.42 MHz

Antenna:

- Built-in Patch Antenna

Electrical and Power:

- Input Voltage +12 Vdc/ +15 Vdc nominal
- Transmit 22 W
- Receive 6 W
- Idle 4 W